

EPSRC CENTRES FOR DOCTORAL TRAINING



Total number of universities involved in funded Centres

75



Total number of new CDTs funded



1,400

Number of project partners



4,600+

The number of students that will be trained in the Centres

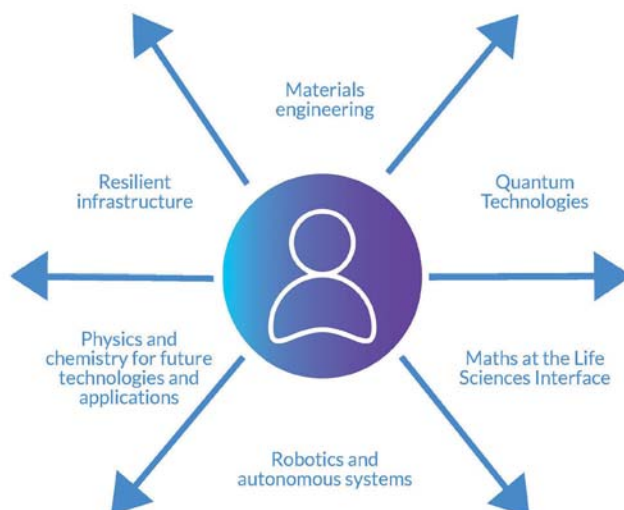
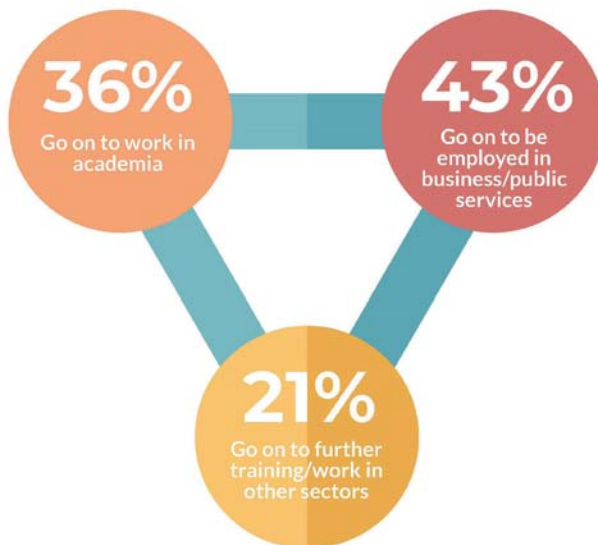


The high number and outstanding quality of CDT proposals put forward demonstrated just how successful the model has been in energising the research community and their partners. It also made the process a difficult but heartening task. I would like to congratulate all those who were successful in being funded and look forward to hearing of the research that will emanate from the Centres.

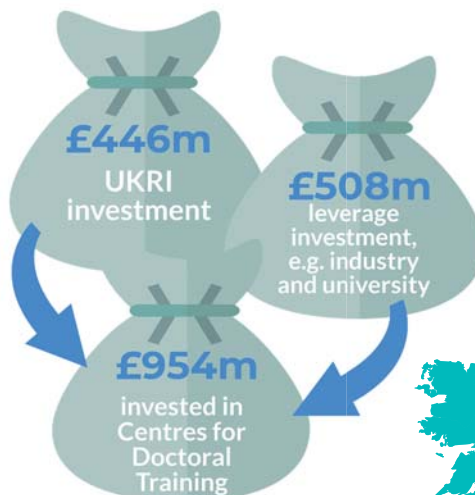
Professor Sir Ian Diamond, Overall Chair of the CDT panels



TYPICAL EPSRC STUDENTS



INVESTMENTS



Cardiff University

- EPSRC Centre for Doctoral Training in Compound Semiconductor Manufacturing

Cranfield University

- EPSRC Centre for Doctoral Training in Water Resilience for Infrastructure and Cities - (WRIC)

Durham University

- EPSRC Centre for Doctoral Training in Soft Matter for Formulation and Industrial Innovation (SOFI2)

Heriot-Watt University

- EPSRC Centre for Doctoral Training in Robotics and Autonomous Systems (CDT-RAS)
- EPSRC Centre for Doctoral Training in Industry-Inspired Photonic Imaging, Sensing and Analysis

Imperial College London

- EPSRC Centre for Doctoral Training in Modern Statistics and Statistical Machine Learning
- EPSRC Centre for Doctoral Training in the Advanced Characterisation of Materials (CDT-ACM)
- EPSRC Centre for Doctoral Training in BioDesign Engineering
- EPSRC Centre for Doctoral Training in Next Generation Synthesis & Reaction Technology
- EPSRC Centre for Doctoral Training in Chemical Biology - Innovation for the Life Sciences
- EPSRC Centre for Doctoral Training in Nuclear Energy Futures

King's College London

- EPSRC Centre for Doctoral Training in Smart Medical Imaging with Imperial College London

Lancaster University

- EPSRC Centre for Doctoral Training in Statistics and Operational Research in Partnership with Industry (STOR-i)

Newcastle University

- EPSRC Centre for Doctoral Training in Geospatial Systems
- EPSRC Centre for Doctoral Training in Molecular Sciences for Medicine
- EPSRC Centre for Doctoral Training in Power Electronics for Sustainable Electric Propulsion (PEEP)

Northumbria University

- EPSRC Centre for Doctoral Training in Renewable Energy Northeast Universities (ReNU)

Queen's University Belfast

- EPSRC Centre for Doctoral Training in Photonic Integration and Advanced Data Storage

Royal Holloway, University of London

- EPSRC Centre for Doctoral Training in Cyber Security for the Everyday

Swansea University

- EPSRC Centre for Doctoral Training in Enhancing Human Interactions and Collaborations with Data and Intelligence Driven Systems
- EPSRC Centre for Doctoral Training in Functional Industrial Coatings

The University of Manchester

- EPSRC Centre for Doctoral Training in Advanced Biomedical Materials
- EPSRC Centre for Doctoral Training in Integrated Catalysis
- EPSRC Centre for Doctoral Training in Nuclear Energy- Growing skills for Reliable Economic Energy from Nuclear (GREEN)

University of Bath

- EPSRC Centre for Doctoral Training in Statistical Applied Mathematics
- EPSRC Centre for Doctoral Training in Advanced Automotive Propulsion Systems

University of Birmingham

- EPSRC Centre for Doctoral Training in Topological Design
- EPSRC Centre for Doctoral Training in Formulation Engineering: Sustainable Structured Products

University of Bristol

- EPSRC Centre for Doctoral Training in Future Autonomous Robotic Systems (FARSCOPE-TU: Towards Ubiquity)
- EPSRC Centre for Doctoral Training in Trust, Identity, Privacy and Security in Large-scale Infrastructures (TIPS-at-Scale)
- EPSRC Centre for Doctoral Training in Computational Statistics and Data Science: COMPASS
- EPSRC Centre for Doctoral Training in Quantum Engineering
- EPSRC Centre for Doctoral Training in Composites Science, Engineering and Manufacturing
- EPSRC Centre for Doctoral Training in Technology Enhanced Chemical Synthesis
- EPSRC Centre for Doctoral Training in Aerosol Science
- EPSRC Centre for Doctoral Training in Digital Health and Care
- EPSRC Centre for Doctoral Training in Future Innovation in Non-Destructive evaluation (FIND)

University of Cambridge

- EPSRC Centre for Doctoral Training in Future Propulsion and Power
- EPSRC Centre for Doctoral Training in Integrated Functional Nano (i4Nano)

- EPSRC Centre of Doctoral Training in Automated Chemical Synthesis Enabled by Digital Molecular Technologies
- EPSRC Centre for Doctoral Training in Sensor Technologies for a Healthy and Sustainable Future
- EPSRC Centre in Doctoral Training in Future Infrastructure and Built Environment: Resilience in a Changing World (FIBE2)

University College London

- EPSRC Centre for Doctoral Training in Connected Electronic and Photonic Systems (CEPS)
- EPSRC Centre for Doctoral Training in Cyber Security
- EPSRC Centre for Doctoral Training in Geometry and Number Theory at the Interface: London School of Geometry and Number Theory
- EPSRC Centre for Doctoral Training in Delivering Quantum Technologies
- EPSRC Centre for Doctoral Training in Bioprocess Engineering Leadership (Complex Biological Products Manufacture)
- EPSRC Centre for Doctoral Training in Intelligent, Integrated Imaging In Healthcare (i4health)
- EPSRC Centre for Doctoral Training in Energy Resilience and the Built Environment

University of Edinburgh

- EPSRC Centre for Doctoral Training in Mathematical Modelling, Analysis and Computation (MAC-MIGS)
- EPSRC Industrial Centre for Doctoral Training in Offshore Renewable Energy (IDCORE)

University of Glasgow

- EPSRC Centre for Doctoral Training in Engineered Tissues for Discovery, Industry and Medicine
- EPSRC Centre for Doctoral Training in Future Ultrasonic Engineering

University of Hull

- EPSRC Centre for Doctoral Training in Offshore Wind Energy and the Environment

University of Leeds

- EPSRC Centre for Doctoral Training in Fluid Dynamics
- EPSRC Centre for Doctoral Training in Molecules to Product
- EPSRC Centre for Doctoral Training in Water and Waste Infrastructure Systems Engineered for Resilience (Water-WISER)

University of Lincoln

- EPSRC Centre for Doctoral Training in Agri-Food Robotics: AgriFoRwArDs

University of Liverpool

- EPSRC Centre for Doctoral Training in Distributed Algorithms: the what, how and where of next-generation data science

University of Nottingham

- EPSRC Centre for Doctoral Training in Horizon: Creating Our Lives in Data
- EPSRC Centre for Doctoral Training in Sustainable Chemistry: Atoms-2-Products an Integrated Approach to Sustainable Chemistry
- EPSRC Centre for Doctoral Training in Transformative Pharmaceutical Technologies
- EPSRC Centre for Doctoral Training in Resilient Decarbonised Fuel Energy Systems
- EPSRC Centre for Doctoral Training in Sustainable Hydrogen (SusHy)

University of Oxford

- EPSRC Centre for Doctoral Training in Autonomous Intelligent Machines and Systems
- EPSRC Centre for Doctoral Training in Health Data Science
- EPSRC Centre for Doctoral Training in Mathematics of Random Systems: Analysis, Modelling and Simulation
- EPSRC Centre for Doctoral Training in Sustainable Approaches to Biomedical Science: Responsible and Reproducible Research (SABS:R^A3)
- EPSRC Centre for Doctoral Training in Inorganic Chemistry for Future Manufacturing (OXICFM)

University of Salford

- EPSRC Centre for Doctoral Training in Prosthetics & Orthotics

University of Sheffield

- EPSRC Centre for Doctoral Training in Advanced Metallic Systems: Metallurgical Challenges for the Digital Manufacturing Environment

University of Strathclyde

- EPSRC Centre for Doctoral Training in Wind and Marine Energy Systems and Structures

University of Warwick

- EPSRC Centre for Doctoral Training in Mathematics for Real-World Systems II
- EPSRC Centre for Doctoral Training in Modelling of Heterogeneous Systems

University of York

- EPSRC Centre for Doctoral Training in Intelligent Games and Game Intelligence (IGGI)